



Permaculture eXchange

Spring 2013

Permaculture DESIGN Certificate Canberra

Oct 20 - Nov 2, 2013

Full Time (Live IN) Course Over 2 Weeks

Venue: Cuppacumbalong Homestead, Tharwa, ACT

Learn how to design backyard or rural systems and grow food for your family and friends...



"We need to garden like farmers and farm like gardeners."

-Geoff Lawton,

The Permaculture Research Institute of Australia



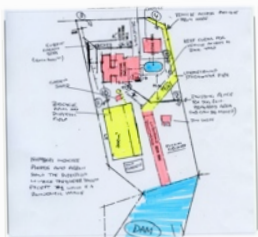
This world recognised, 72-hour course provides an introduction to Permaculture as set forth by movement founder Bill Mollison, resulting in a Permaculture Design Certificate (PDC) upon completion.

The PDC serves as foundation for further Permaculture work and study which is a prerequisite for the Diploma in Permaculture Design, offered through The Permaculture Institute. Credit for this course is accepted by a growing number of universities around the

world.

To date, thousands of Permaculture designers worldwide have been certified through this course, and now comprise a global network of educators and ecological activists who influence major corporations, individuals creating new business alternatives and groups of committed people working together to change the way we view and design into our landscapes.

The course covers sustainable living systems for a wide variety of landscapes and climates. It includes the application of Permaculture principles to food production, home design, construction, energy conservation and generation, and explores alternative economic structures and supporting Permaculture solutions.



Book your place P3



Meet the instructors P2



Booking Accommodation P3

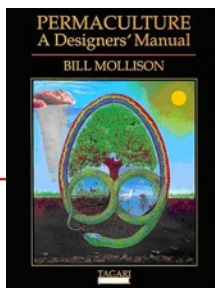
Meet your instructors for the Spring 2013 PDC

SPECIFIC TOPICS INCLUDE:

- * Theory and principles of Permaculture
- * Eco-friendly house placement and design
- * Energy conservation techniques for cold climates
- * Recycling and waste management
- * Organic food production
- * Water harvesting and management
- * Ecological pest control
- * Drought-proofing
- * Soil rehabilitation and erosion control
- * Livestock
- * Aquaculture
- * Catastrophe preparedness and prevention
- * Windbreaks and fire control.

THE FOUNDATION FOR THIS COURSE IS THE PERMACULTURE DESIGNER'S MANUAL BY BILL MOLLISON AND IS DISTRIBUTED TO STUDENTS ON THE FIRST DAY. THE

MANUAL IS INCLUDED IN THE COST OF THE COURSE TUITION.



VENUE:

Historic Cuppacumbalong Homestead at Thawra, Canberra ACT. See [LINK](#) for more details of the Spring 2013 PDC venue and accommodation.

CATERING:

This event will be fully catered, the cost included in your course fee. Morning and afternoon tea, and a delicious lunch provided each day. Our aim is to source locally grown, nutritionally dense wholesome food where possible. Live in students will have full access to cooking facilities at the venue for breakfast and dinner.



NICK HUGGINS

Lead Instructor for PDC

Permaculture has always been in Nick's blood. With a ever expanding teaching program Nick's focus is people, creating new enterprises and forms of fair exchange. A self professed Permaculture Entrepreneur, Nick has a real passion for helping people make a new career start in **Permaculture Business**. Nick lives on Jacmarall Farm. A 103ac/40.3ha polycultural farm in the Southern Tablelands town of Tarago NSW. His current vocation sees him travel Australia-wide in Permaculture design, consultation, and education, teaching at world renowned education facilities like **The Permaculture Research Institute of Australia** to students from around the globe. Nick has a passion for producing food and repairing landscapes. The tools that he applies are diverse. From Permaculture as the design framework to Keyline, Holistic Grazing Management, Biodynamics, Natural sequence Farming and many more.

[See Professional Permaculture & Business CV online](#)



COLIN MCLEAN

Co - Teaching on PDC

Colin has gradually embraced and implemented permaculture and other land management learnings over the past 5 years as he and his wife Lea transitioned from suburban life in the Blue Mountains to a more self sufficient lifestyle in Braidwood NSW.

Colin's Permaculture journey started with an Introduction to Permaculture course with John Champagne followed by a PDC with Geoff Lawton, providing Colin with the skills and knowledge to create the Permaculture design for his property, Nunyara Farm, at Braidwood. The design incorporated earthworks to create dams connected by swales to build hydrology in very depleted soil, and to plant more than 1000 trees to build up soil health as well as the construction of a passive solar home. The success of the recovery and rehabilitation work now sees Colin and Lea implementing productive elements in terms of fruit trees, house gardens, cider apple orchard, cattle and chickens in the next phase of what will be a long term and organically developing plan for life.



DAN HARRIS-PASCAL

Dan has been working in Permaculture, Ecology and Horticulture for the last 5 years and brings extensive skills and knowledge to any project. His background in Horticulture and Ecology means that he understands the functions of many different plants and the environments they grow in. More recently he has been designing and implementing Forest Garden systems using the Design Framework outlined by Dave Jacke and Eric Toensmeier in Edible Forest Gardens. He has designed and developed an excellent teaching program to enable students to understand the ecological principles that allow a forest to function and how to design a garden to encourage those processes to develop resilient, productive polycultures.

This Spring PDC will be the 1st full time live in course ever run in the ACT or NSW Southern Tablelands. Staying onsite is optional and it will only extend your learning. This the course will be set on a working farm complete with animal systems and working gardens. Students will have a chance each day to engage in working farm activities from Free Range Egg production, Sheep, Veggie Garden systems and a host of other exciting learning experiences which will see the course take in a huge 170 hours of Permaculture involved hands on design and practical.

General Day to Day PDC Program

| Session Name | Time | Minutes |
|-------------------|--------------|---------------|
| Morning Farm Jobs | 0600 - 0800 | 120 |
| Breakfast | 0800 - 0900 | 60 |
| A | 0900 - 1030 | 90 |
| Morning Tea | 1030 - 1100 | 30 |
| B | 1100 - 1230 | 90 |
| Lunch | 1230 - 1330 | 60 |
| C | 1330 - 1500 | 90 |
| Afternoon Tea | 1500 - 1530 | 30 |
| D | 1530 - 1700 | 90 |
| E | After Dinner | 120 |
| | | 13 hr per day |

Flying to The Spring PDC

International flights

Fly into an interstate airport such as Sydney, Melbourne, or Brisbane, then take a domestic flight to Canberra.

Domestic flights

Canberra is less than 2 hours flying from eastern state capitals like Sydney, Brisbane and Melbourne. Major airlines fly daily and you can book flights with regional experts Brindabella Airlines, or domestic and international carriers Qantas and Virgin Australia.

Brindabella Airlines

Brindabella Airlines will fly you between Albury, Canberra, Newcastle, Port Macquarie, Coffs Harbour and Brisbane. Brindabella Airlines is a Qantas affiliate airline so you can earn or redeem Qantas frequent flyer points on all flights. Visit www.brindabellaairlines.com.au

Qantas

Qantas has regular flights to Canberra from Sydney, Melbourne, Brisbane, Adelaide and Perth. Visit www.qantas.com.au

Virgin Australia

Virgin Australia Airlines strives to reduce the cost and confusion of air travel. Their aim is to make flying in Australia a relaxing and enjoyable experience. Visit www.virginaustralia.com

Being a full time course accommodation will be available on site. You have the choice of BYO camping or caravan on the Cuppacumbalong Farm or bunk style share in the main house which will be limited to 11 people only with shared bathroom so get your spot booked early.

Camping & Caravan will have to share the house bathroom. Fee for Camping will be \$10 per day with the use of the kitchen facilities for prep of Breakfast and Dinner.

Bunk accommodation in the main house will be \$40 per day with the use of the kitchen facilities for prep of Breakfast and Dinner. This includes a cleaning service at the end of 7 days.

One private queen bed is available at \$55 per night. This includes a cleaning service at the end of 7 days.

Driving to The Spring PDC

From Sydney

Direct driving route: 3.5 hours. Canberra is the closest capital to Sydney for a city weekend away. Depart Sydney via the M5 tollway, connecting to Hume Highway 31. Turn left after Goulburn on to the Federal Highway to Canberra. This route is a dual carriage freeway.

From Melbourne

Direct driving route: 8 hours. Follow the City Link tollway to the western ring road then join the Hume Highway. Near Yass, take the Barton Highway turn off to Canberra. This route is a dual carriage freeway.

From the Snowy Mountains

Direct driving route: 2.5 hours. Follow the Kosciuszko Road to Cooma, and then follow the Monaro Highway to Canberra. This route includes single carriage highway.

From the South Coast

Direct driving route: 2.5 hours. Take the Kings Highway to Queanbeyan and continue on to Canberra.

SPRING WEATHER IN CANBERRA

Canberra is a rare treat among Australian cities providing a kaleidoscope of colour, activity and experiences throughout the year.

Spring is glorious. Awake to moderately fresh mornings, bright, sunny days and brisk nights. Canberra enjoys longer sunshine hours in spring than Sydney and Melbourne making it ideal.

| Season | Average Min* | Average Max* | Average sunshine hours |
|--------|--------------|--------------|------------------------|
| Spring | 6 (40) | 19 (66) | 8.4 |
| Summer | 12 (54) | 27 (81) | 9.3 |
| Autumn | 7 (45) | 20 (68) | 7.1 |

Important information about this course

Course dates:

The course will be run over spring, full time for 2 weeks :

Starting 20th of October running through 21, 22, 23, 24, 25th Permaculture designed farm and garden tour on 26th October from Canberra to Braidwood and return.

27th October Day Off - Rest and relax around Canberra. 28th October through 29, 30, 31st - 1st November 2nd November Design presentation and course completion at 4.30pm.

The course is the full 72 hour PDC set out by Bill Mollison. These date are now confirmed with our venue. All days must be attended to attain the Certificate of Permaculture Design. We are realistic, if you miss a day or two we will run catch up days following the PDC on demand at no extra cost.

Course hours: 9am to 5pm over the 2 weeks with on farm work and education in the early morning and at night.

Milestone Dates:

- 16th September, 12pm - the Early Bird booking discount period ends. Payment must be received in full before this date to receive the discount.
- 30th September, 12pm - Cut off date to finalise your booking and payment in full. If we don't receive your payment in full by this date, your booking will be moved back to the waiting list.
- Friday 4th October 12pm - This will be PDC confirmation date that the numbers we have committed for the PDC will go ahead.
- Saturday 20th October - Official start day of the Spring PDC.

Cancellations and Refunds

If you are unable to attend the course, another person may attend in your place for the entire course duration at no extra charge. Full course fee is payable for non-attendance, See details below. Course attendance is subject to availability and a cut-off point to make the course viable. Permaculture eXchange Inc reserves the right to cancel this Course. Notification of cancellations will be given 2 weeks prior to course commencement via Email or Phone call.

More than 30 days prior to course commencement: If you wish to cancel your course outside of 30 days prior to the course start date, Workshop fees will be refunded less \$75 administration fee will be retained.

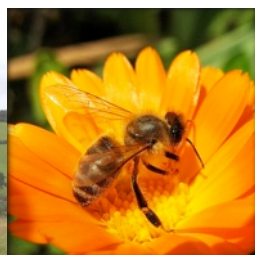
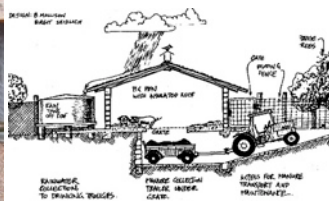
Between 14-30 days from course commencement: If you cancel your course within 30 days but outside of 14 days of the start date of the course fee will be refunded but the deposit withheld in full.

Between 0-14 days from course commencement: If you cancel your course within 14 days of the start date, no refund will be provided. (In cases of extreme hardship, you are welcome to contact us and discuss the matter with us.)

Cancellation Refund Policy: All cancellation payments will be made payable 30 days after the completion of the workshop and not before.

Refund policy after Workshop commencement: Please choose carefully. We do not give refunds if you simply change your mind during the course. You can choose between a refund, if the workshop was wrongly described, different from a sample shown to you or don't include what they are advertised to.

Refunds: In the unlikely event that we are forced to cancel a course you will promptly receive a full refund. If we need to postpone a course we will contact you immediately and either give you a full refund.



DESIGN YOUR OWN PERMACULTURE FOOD GARDEN FOR HOME OR FARM ON THE PDC

Students are invited to bring details of their own sites or potential sites to consider during the course. PDC graduates leave our courses ready to design and implement permaculture principles into a wide range of scenarios; from urban permaculture systems to small farms and overseas aid projects.

This PDC will be taught in combination within both a classroom, private gardens and farms, also community garden environment, with site visits to amazing urban and rural permaculture systems.

During this PDC, examples of designing for energy conservation, food production systems, nutrient cycling and more will all be addressed with a combination of rural and urban examples.

Permaculture is set of principles that result in sustainable and productive systems. Systems for living, architecture, food production, land management and community. No chemicals and no excuses. Just good, thoughtful, innovative and effective design for the needs of our species.



COURSE INVESTMENT:

Included in your course fee:

The course text *Permaculture: A Designers Manual* (RRP \$120), venue hire, certified teachers, course notes catering for lunch and breaks.

You will receive an certificate which is recognised by all major permaculture certifying bodies and some major world wide universities also a one day tour of Farms and Gardens design using Permaculture principals.

Total investment in your future food security - \$1650.00 pp early bird price.
Full fee \$1950.00 pp. Discounts do apply for group bookings see our website for details.

COURSE DETAILS

[THIS PERMACULTURE DESIGN COURSE IS SUPPORTED AND PROMOTED BY](#)



THE WINTER PDC IS SUPPORTED AND RUN BY PERMACULTURE EXCHANGE INC NSW - A NOT FOR PROFIT GROUP.



To express your interest in this course please contact us on the details below and we can keep you updated.

Go to www.permacultureexchange.org.au for more details and course bookings.

If you would like to talk to someone about course specific contact:

Penny Kothe - Admin on 0400 165 403 or email admin@permacultureexchange.org.au